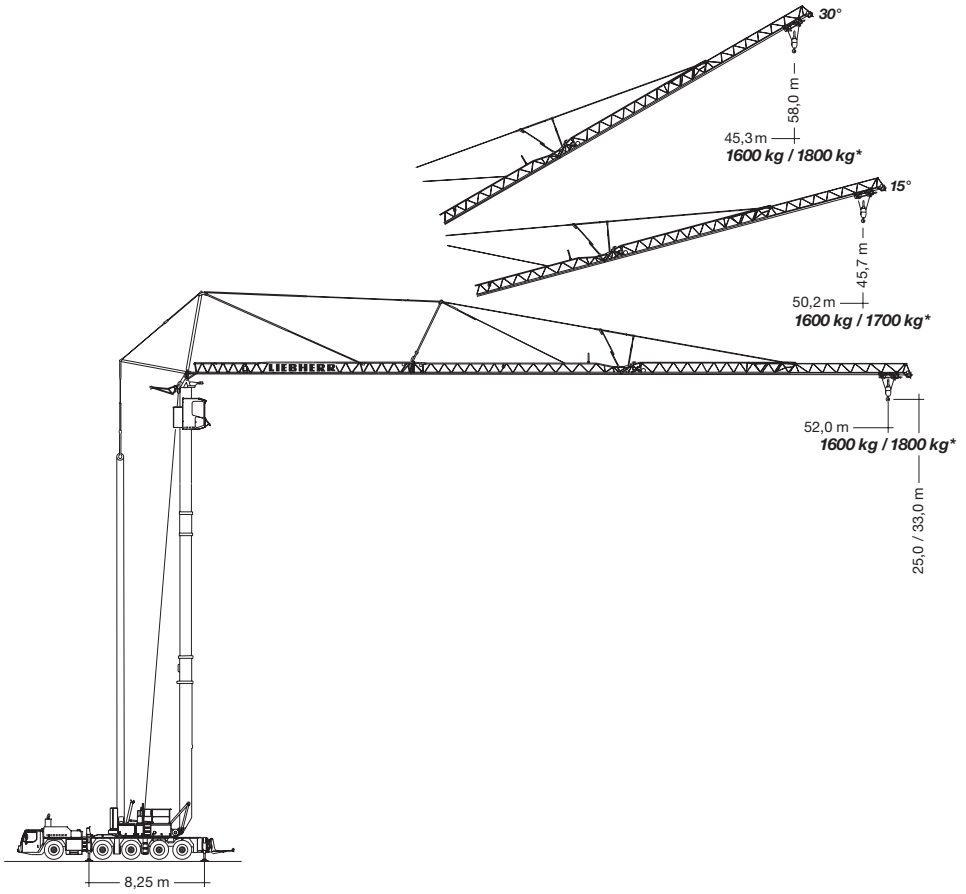


**EDINS**  
08-36 96 00

**Liebherr**  
**MK 110**

SJÄLVRESANDE  
MOBILKRANAR

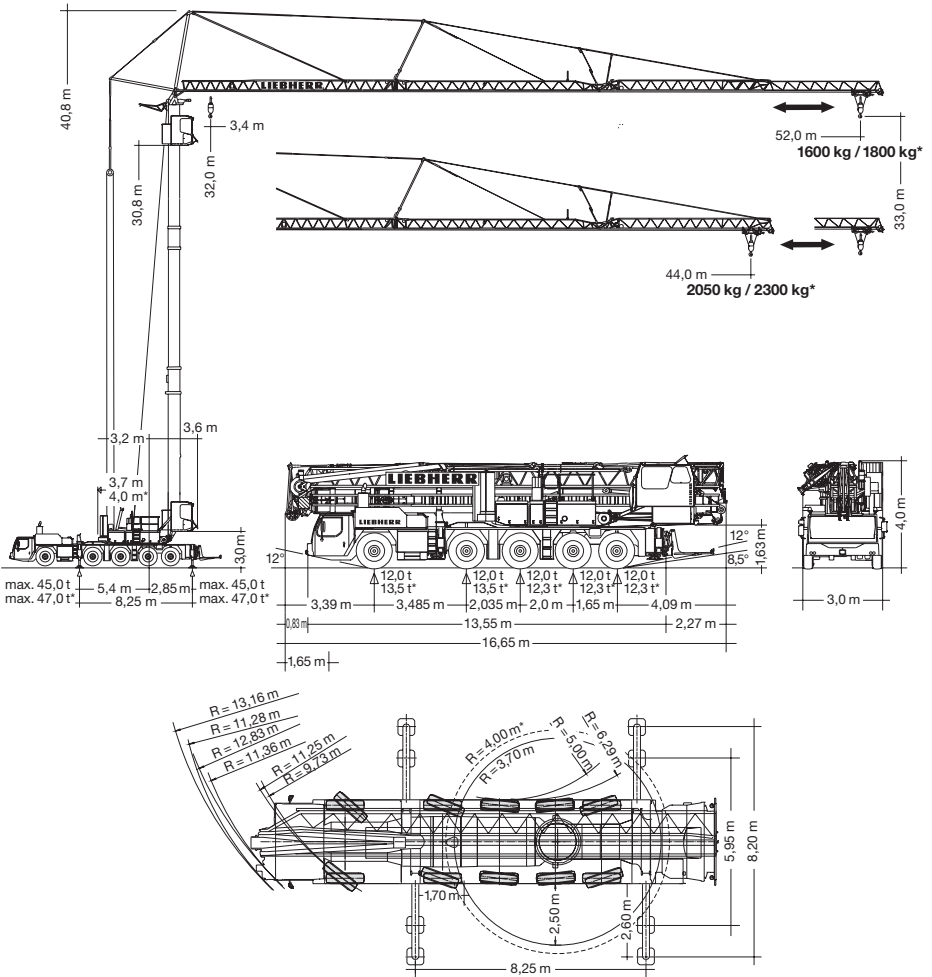


# EDINS

08-36 96 00

Liebherr  
MK 110

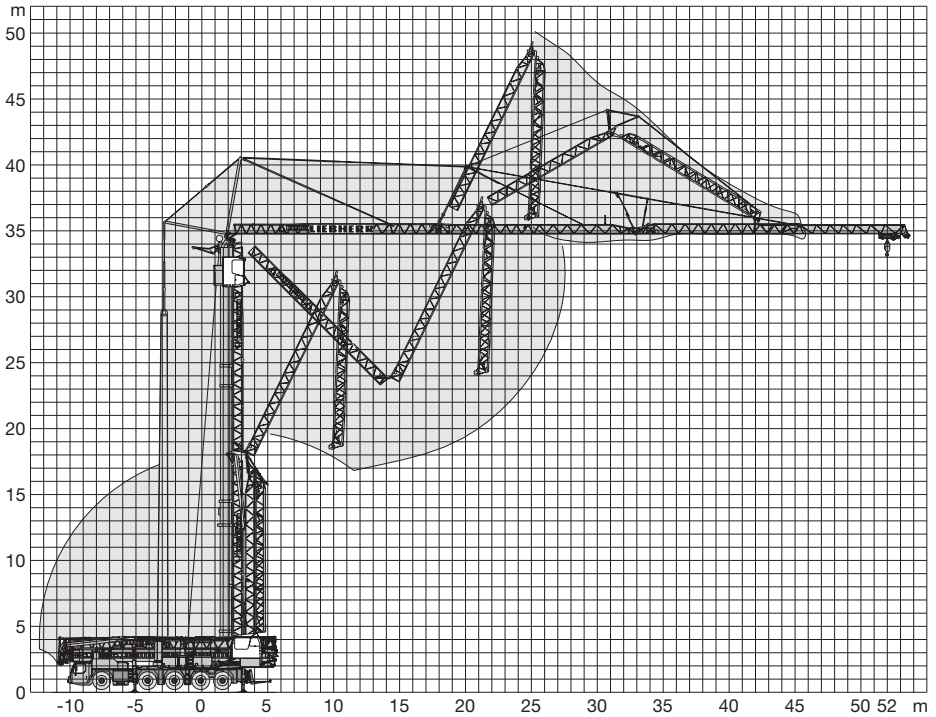
SJÄLVRESANDE  
MOBILKRANAR



**EDINS**  
08-36 96 00

**Liebherr**  
**MK 110**

SJÄLVRESANDE  
MOBILKRAMANAR



## Traglasten MK 100


Lifting capacities MK 100 / Capacités de levage MK 100  
Capacità di carico MK 100 / Capacidad de carga de la MK 100  
Hijstabel MK 100 / Грузоподъемность крана MK 100

Max. Lastmoment 116 mt

Max. load moment 116 mt / Moment de charge max. 116 mt  
Momento di carico max 116 tm / Momento de carga máx. 116 tm  
Maximale lastmoment 116 tm / Макс. грузовой момент

### Ausleger horizontal


Jib horizontal / Flèche horizontale / Braccio orizzontale  
Pluma horizontal / Giek horizontaal / Стрела в горизонтальном положении

8,25 m x 8,20 m	m	m / kg	m / kg																
			14,0	18,0	22,0	26,0	28,0	30,0	32,0	34,0	36,0	38,0	40,0	42,0	44,0	46,0	48,0	50,0	52,0
 max. 8,0 Bft (20 m/sec.)	52,0	3,4-14,0 8000	8000	5930	4670	3830	3500	3220	2980	2760	2570	2400	2250	2120	1990	1880	1780	1690	1600
	44,0	3,4-14,5 8000	8000	6150	4830	3950	3610	3320	3060	2840	2650	2470	2320	2180	2050				


Außer Betrieb keine Demontage notwendig. / Crane does not need to be disassembled when it is not in operation. / La grue n'a pas besoin d'être démontée lorsqu'elle est mise au repos. / Smontaggio non necessario, quando la gru è fuori servizio. / No es necesario desmontar la grúa en caso de no trabajar con ella. / Indien niet in gebruik, is geen demontage noodzakelijk. / Вне работы демонтаж не требуется.

### Auslegersteilstellungen

Steep angle positions / Flèche en position relevée  
Posizione impennata del braccio / Inclinación de pluma / Hoofdgiekstand / Положение стрелы под углом

8,25 m x 8,20 m	m	m / kg	m		kg															
			3,4	50,2	15°															
 max. 8,0 Bft (20 m/sec.)	52,0		3,4	50,2	1600															
	44,0		3,4	42,5	1700															

8,25 m x 8,20 m	m	m / kg	m / kg																
			14,0	16,0	18,0	20,0	22,0	24,0	26,0	28,0	30,0	32,0	34,0	36,0	38,4	40,0	42,0	44,0	45,3
 max. 8,0 Bft (20 m/sec.)	52,0	3,4-14,0 6000	6000	5230	4630	4140	3730	3390	3100	2850	2640	2450	2280	2130	1970	1870	1760	1660	1600
	44,0	3,4-15,0 6000	6000	5540	4900	4390	3960	3600	3300	3030	2810	2610	2430	2270	2100				

## Traglasten MK 110

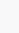
Lifting capacities MK 110 / Capacités de levage MK 110  
Capacità di carico MK 110 / Capacidad de carga de la MK 110  
Hijstabel MK 110 / Грузоподъемность крана MK 110

Max. Lastmoment 121 mt

Max. load moment 121 mt / Moment de charge max. 121 mt  
Momento di carico max 121 tm / Momento de carga máx. 121 tm  
Maximale lastmoment 121 tm / Макс. грузовой момент

### Ausleger horizontal


Jib horizontal / Flèche horizontale / Braccio orizzontale  
Pluma horizontal / Giek horizontaal / Стрела в горизонтальном положении

8,25 m x 8,20 m	m	m / kg	m / kg																
			14,0	18,0	22,0	26,0	28,0	30,0	32,0	34,0	36,0	38,0	40,0	42,0	44,0	46,0	48,0	50,0	52,0
 max. 8,0 Bft (20 m/sec.)	52,0	3,4-14,7 8000	8000	6370	5060	4180	3830	3530	3280	3050	2850	2670	2500	2360	2230	2100	1990	1890	1800
	44,0	3,4-15,1 8000	8000	6550	5220	4300	3950	3640	3380	3140	2940	2750	2590	2440	2300				

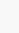
Außer Betrieb keine Demontage notwendig. / Crane does not need to be disassembled when it is not in operation. / La grue n'a pas besoin d'être démontée lorsqu'elle est mise au repos. / Smontaggio non necessario, quando la gru è fuori servizio. / No es necesario desmontar la grúa en caso de no trabajar con ella. / Indien niet in gebruik, is geen demontage noodzakelijk. / Вне работы демонтаж не требуется.

### Auslegersteilstellungen

Steep angle positions / Flèche en position relevée  
Posizione impennata del braccio / Inclinación de pluma / Hoofdgiekstand / Положение стрелы под углом

8,25 m x 8,20 m	m	m / kg	m		kg															
			3,4	50,2	15°															
 max. 8,0 Bft (20 m/sec.)	52,0		3,4	50,2	1700															
	44,0		3,4	42,5	1700															

8,25 m x 8,20 m	m	m / kg	m / kg																
			14,0	16,0	18,0	20,0	22,0	24,0	26,0	28,0	30,0	32,0	34,0	36,0	38,4	40,0	42,0	44,0	45,3
 max. 8,0 Bft (20 m/sec.)	52,0	3,4-14,7 6000	6000	5530	4930	4430	4020	3680	3380	3120	2890	2700	2520	2360	2190	2090	1970	1860	1800
	44,0	3,4-15,8 6000	6000	5910	5250	4710	4260	3890	3570	3290	3050	2840	2650	2480	2300				