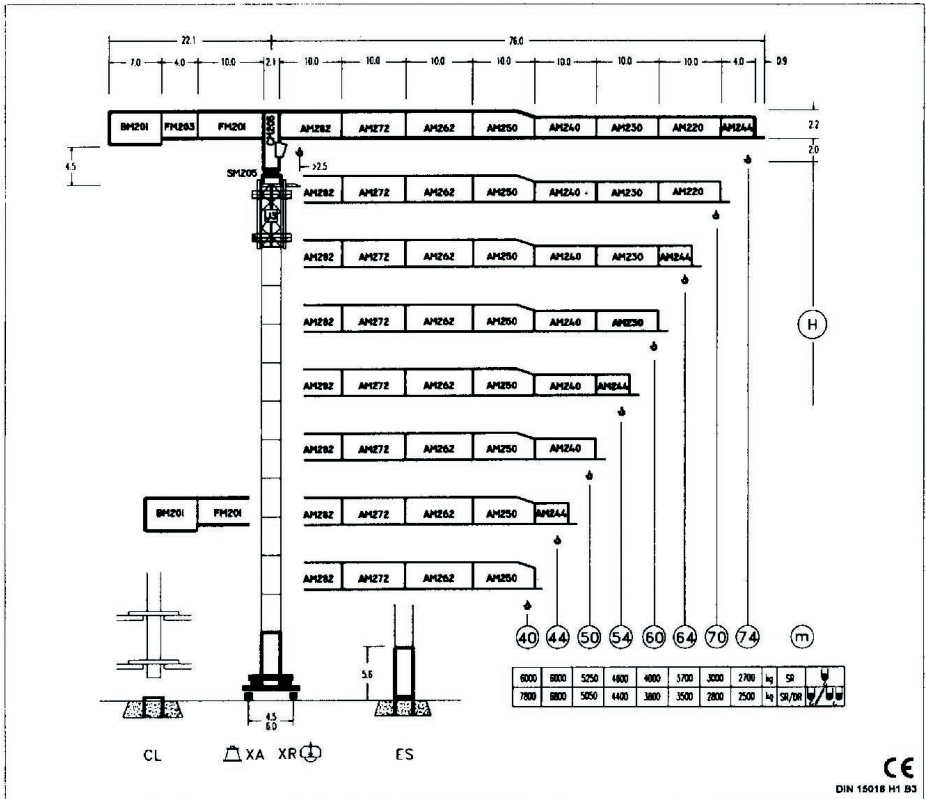


## LC-2074

12 t



CE  
DIN 15018 H1 B3

(R)	R <sub>(Cmax)</sub>	C <sub>max</sub>	30	34	40	44	50	54	60	64	70	74
(74)	SR 37.7	6000	6000	6000	5610	5030	4330	3960	3490	3230	2890	2700
	SR/DR 20.1	12000	7610	6580	5430	4850	4150	3770	3300	3030	2690	2500
(70)	SR 38.8	6000	6000	6000	5800	5200	4480	4100	3620	3350	3000	
	SR/DR 20.7	12000	7860	6800	5620	5020	4290	3910	3420	3150	2800	
(64)	SR 42.2	6000	6000	6000	5720	5090	4480	4520	3990	3700		
	SR/DR 22.4	12000	8620	7470	6190	5530	4750	4320	3800	3500		
(60)	SR 42.2	6000	6000	6000	5730	5090	4950	4520	4000			
	SR/DR 22.4	12000	8630	7480	6190	5540	4750	4330	3800			
(54)	SR 42.8	6000	6000	6000	5820	5030	5820	4830	4500			
	SR/DR 22.7	12000	8760	7590	6280	5620	4830	4400				
(50)	SR 44.5	6000	6000	6000	6000	6000	6000	6000	5250			
	SR/DR 23.6	12000	9130	7920	6570	5880	5050					
(44)	SR 44.0	6000	6000	6000	6000	6000	6000	6000				
	SR/DR 26.6	12000	10500	9120	7590	6800						
(40)	SR 40.0	6000	6000	6000	6000	6000	6000	6000				
	SR/DR 27.3	12000	10790	9380	7800							