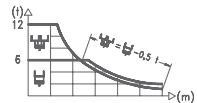
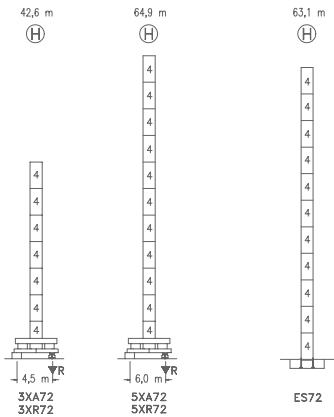


CE
DIN 15018 H1 B3

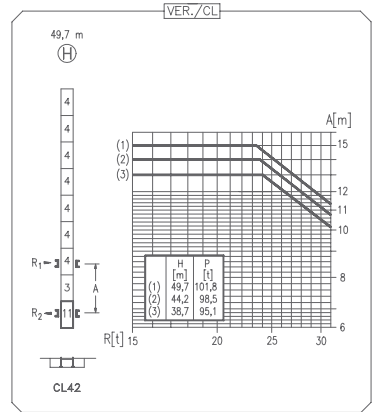
R	⚙️				⚙️									
74	20.2	25	30	35.9	37.3	40	44	50	54	60	64	70	74	m
	12000	9345	7500	6000	6000	5545	4980	4300	3930	3475	3220	2890	2700	kg
70	20.7	25	30	36.8	38.5	40	44	50	54	60	64	70	m	
	12000	9610	7720	6000	6000	5745	5155	4455	4075	3605	3340	3000	kg	
64	22.3	25	30	34	39.6	41.9	44	50	54	60	64	m		
	12000	10470	8430	7245	6000	6000	5685	4920	4505	3990	3700	kg		
60	22.1	25	30	34	39.4	42.0	44	50	54	60	m			
	12000	10390	8370	7195	6000	6000	5695	4930	4515	4000	kg			
54	22.3	25	30	34	39.8	42.7	44	50	54	m				
	12000	10500	8460	7275	6000	6000	5800	5020	4600	kg				
50	23.2	25	30	34	40	41.4	44.8	50	m					
	12000	11005	8880	7645	6265	6000	6000	5300	kg					
44	25.9	30	34	37	40	44	m							
	12000	10100	8715	7880	7170	6500	kg							
40	26.4	30	34	37	40	m								
	12000	10345	8930	8075	7500	kg								



DS.0346.27 09/05 Reserva de modificaciones.- Subject to modifications.- Modifications réservées.- Konstruktionsänderungen vorbehalten.



N	Ref.	L (m)	h
3	TD23A	2,0	5,5
4	S25	2,0	5,5
11	CLD23A	2,0	3,1



R. máx.	En servicio In operation En service In Betrieb	3XR72 105,9 t
		5XR72 113,6 t

R. máx.	Fuera de servicio Out of service Hors service Ausser Betrieb	3XR72 90,3 t
		5XR72 150,3 t

CFU-7.5

7,5 kW

0 ↻ 94 m/min

GR-12

3 x 120 Nm

0 ↻ 0,7 rpm

TRA-7.5

2 x 75 Nm

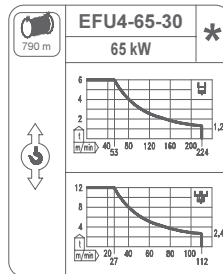
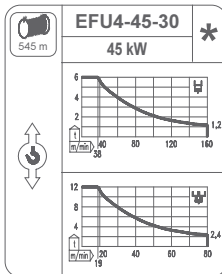
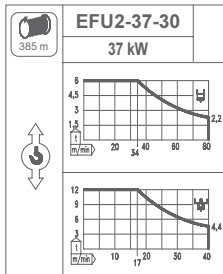
0 ↻ 20 m/min

TRA-7.5VC

2 x 75 Nm

0 ↻ 20 m/min

5XR72



Tensión de alimentación Operating voltage Tension de service Betriebsspannung	400 V 3 ph 50 Hz
--	------------------------

Opcional Optional En option Kaufoption	*
---	---